

Manipulative Surgery

By Robert L. Gear Jr. NMD (U.S.A. – Arizona),
and Robert L. Gear III DO (U.S.A.)

Presented to the therapists and physicians at the King Faisal Specialist Hospital at the request of the Prince Salman Center for Disability Research, Riyadh, Kingdom of Saudi Arabia - May, 2008

“The first day we all pointed to our own countries.

The third or fourth day we were pointing to our continents.

By the fifth day we were aware of only one Earth”
-Prince Sultan bin Salman, Astronaut

- Like the God-Given Earth, we each have one God-Given Body.
- The Integration of the Organs and Function is no different than the integration of all people and countries of the earth.
- Life is a matter of motion.
- A healthy body is a perfect machine that is created for activity, and the natural state of harmony exists when there is a normal flow of body fluids and nerve activity.

CAUSE OF DISEASE

Diseases are commonly the result of mechanical impediments to the normal flow of body fluids and nerve activity.

The body machine cannot run without proper lubrication which nourishes, fuels, and allows chemical and physical hydrologic mechanisms to remove the body machine’s waste products.

The removal of impediments or fixations permits optimal body fluid flow, nerve function and restoration of health, thereby restoring the flow of all chemicals necessary needed for the patient’s tissues and organs.

Normal functioning of structural motor units allows unimpeded flow of blood. This preserves and feeds the cells of body parts and is essential if normal cell function is to be maintained.

EVALUATING THE PATIENT

Before any scientifically directed treatment can begin we must first perform an evaluation of the person before us to determine the most effective course of action to be taken. This is commonly called Triage.

The five points to evaluate in each patient in order to properly understand their presenting symptoms and condition is in the order of precedence as follows.

Genetics
Structure
Chemistry
Psychology
Pathological Organism

GENETICS

We are born with the DNA code God gave us through our mother's egg and our father's sperm.

Humans are fast learning how to change the code for better or worse.

In the next century this type of disease will be handled by medical genetic specialists, such as those currently working with the Prince Salman Center for Disability Research.

STRUCTURAL FORMATION

Structural formation and configuration are the determiners of fluid movement throughout the body.

Any interference with the free flow of fluid results in reduced nutrition and/or increased concentration of byproducts of cellular metabolism.

The resultant cellular changes in nutrition and excretion manifest as disease. This affects the following three points.

CHEMISTRY

Environmental and/or conscious choices of chemical input to the body determine whether the cell structure changes from moment to moment toward a healthy existence or a diseased existence.

PSYCHOLOGY

As a human thinks so will the chemistry of the brain influence the functioning of the entire structure.

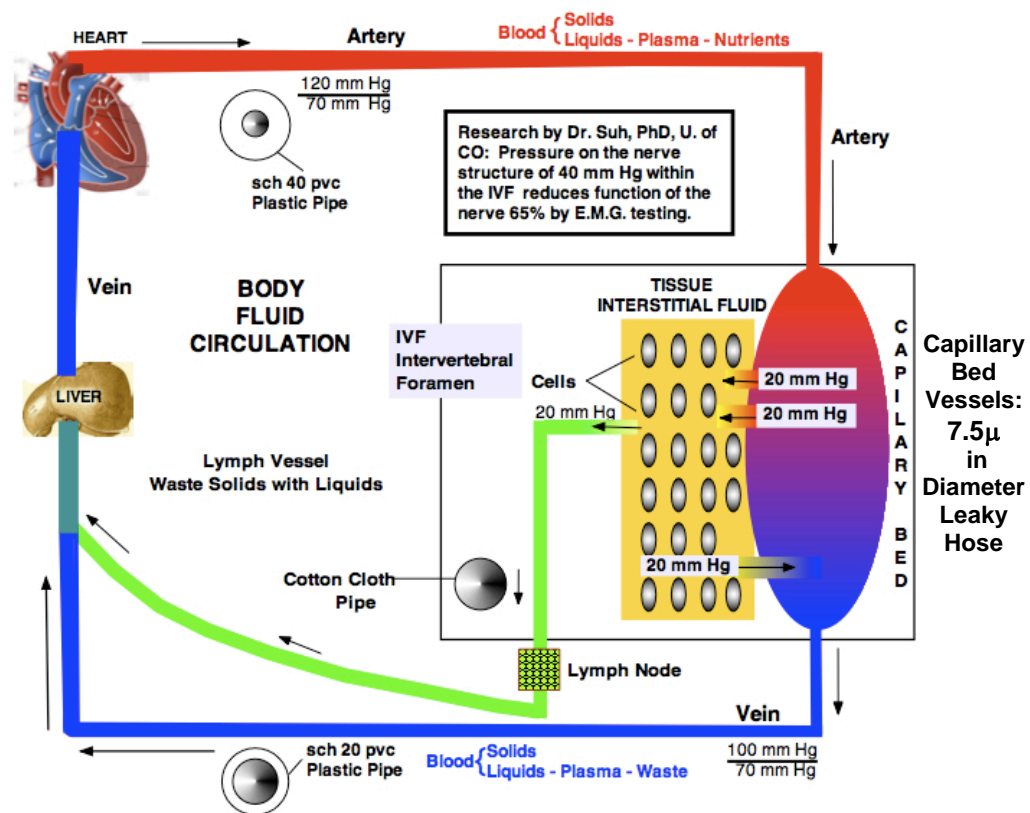
As researched and documented by Hans Selye, M.D. in his books Stress of Life and Stress without Distress written over fifty years ago.

This is well documented by our understanding of the normal and abnormal effects of stress to which neurobiologists are adding daily.

ORGANISMS LIVING IN THE BODY

Highly virulent organisms living in the body that should not be living in the body (one cell or more celled parasites) and low virulence organisms that are commonly found in the body but living in abnormal numbers due to one of the preceding four items.

Body Tissue Circulation



Copyright 2008

The body circulation represented above is representative of all tissues. The rectangle around the capillary bed and tissue represents the intervertebral foramen. The tissue represents the spinal nerve. Explanation of my original diagram drawing follows.

The heart pumps blood through the arteries which have a thick muscular layer that can be likened to the white plastic pvc pipe named schedule 40. The veins also have a muscular layer but it is about one half as thick and as strong. The vein can be likened to the white plastic pvc pipe named schedule 20. The

lymphatic vessels have no muscular layer surrounding them and are like cotton cloth pipe. The schedule 40 strength and the schedule 20 strength pipes can withstand considerable compressive force but the lymph vessel can only withstand force equal to the hydrostatic pressure holding it open. As noted in the diagram, Dr. Suh (a PhD research scientist at the University of Colorado) found about 28 years ago that it only took 45 mm of mercury pressure on the spinal nerve in the intervertebral foramen to reduce its ability to carry nervous impulses along its entire course by 65%. That means that if the pressure is in a thoracic intervertebral foramen the sympathetic nerve to the blood vessels of the target organ will be lowered in their ability to function and the parasympathetic nerve to that same target organ that is normally functioning will seem to be increased in its ability to function. For ulcerative and other inflammatory stomach problems including GERD, the surgeons used to think that cutting the vagus nerve was the answer. But that just created another problem. One does not fix a weakened nerve by making its counterpoint nerve weak also. One should look to make the weak nerve normal in strength to restore balance to the organism. Then a bacteria was found to be present in the ulcer of the stomach. Didn't matter that it was also found in most other human beings (stomach problems are very common due to the trouble people have with their thoracic spine regions). So treatment of the bacteria was thought to be the cure. While it afforded relief to have the bacteria reduced or eliminated in peoples stomach it was not the cure for a great many people. The spine needs to be addressed in the diagnostic workup in all people and corrections made, as needed then the infectious organism regimes may not be required or will have a very good chance of being successful at much lowered chemical challenge to the infected person.

- Blockage of lymph fluid drainage results in increased tissue pressure and reduction of food and waste exchange.
- Malfunction of the autonomic, nutritive, and voluntary nerves may then be affected.
- The initial need for treatment is determined by clinical and physical measures that manifest joint range of motion restrictions.

Spinal Blood Circulation Related To Organs Begins With Somite Formations In The Embryo.

Manipulative Surgery affects the entire associated body due to tissue relation through associated Embryological Somite Differentiation

Now that we reviewed some basics of anatomy and function, we ask the questions:

- Just what is Manipulative Surgery (MS)?
- What can we expect following a course of manipulative surgery to full joint function?
- How do we administer manipulative surgery?

These questions need a lot of explaining and the practical demonstration for your discerning pleasure.

Joint Pathology Resulting In Medical Indications That Demonstrate The Need For MS

- Fixation - Fixed Joint resulting from infiltration of fibrotic cells attaching to tissue and thereby limiting the range of joint motion (ROM) following trauma.
- Trauma - A chemical or physical wound or injury creating the biochemical messengers attracting fibroblasts to the site.

Medical Conditions That Respond Well Following MS Treatment Scoliosis correction or correction of its morbidity

Ineffective Treatment For Scoliosis Without Utilizing Manipulative Surgery (MS)

- Standard chiropractic adjustments or osteopathic manipulative treatment
- Electrical stimulation – not effective for correction but helpful in regaining and/or maintaining tone in the paravertebral muscles following MS joint fixation releases.
- Nutritional supplements – necessary to provide tissue nutrition due to commonly compromised absorption from the ilium of the small intestine.
- Exercise – not effective for correction but necessary for maintaining range of motion achieved by MS

MS Is Beneficial For the Following Conditions:

- Lumbar Disc problems in the athlete
- Lumbosacral disc injuries
- Lumbosacral Discogenic Pain Syndrome
- Lumbosacral Facet Syndrome
- Lumbosacral Radiculopathy
- Lumbosacral Spine Acute Bony Injuries

Medical Conditions That Respond Well Following MS Treatment

- Reduction of edema in the intervertebral foramina, facet joints, and disc joints by restoration of mobility is the desired result. Increase in disc height occurs with patients regaining up to 2 ¼ inches of previously lost height. Increase in each intervertebral foramen space allows increase in fluid movement to feed the tissues and eliminate their metabolic waste.

Additional Medical Conditions That Respond Well Following MS Treatment

- Osteoarthritis correction of underlying joint loss of mobility
- Correction of the results of spinal joint trauma; i.e., Atlantoaxial Injury and Dysfunction, Cervical Disc Injuries, Cervical Discogenic Pain Syndrome, Cervical Radiculopathy, Cervical Facet Syndrome, Cervical Radiculopathy, Cervical spine acute Bony Injuries, Cervical Spine Sprain Injuries, Cervical Strain Injuries, Degenerative Lumbar Disc disease in the Mature Athlete, Lumbar Disc Problems in the Younger Athlete, Lumbosacral Disc Injuries, Lumbosacral discogenic Pain Syndrome,

A Few More Medical Conditions That Respond Well Following MS Treatment

- Lumbosacral Facet Syndrome, Lumbosacral Radiculopathy, Lumbosacral Spine Acute Bony Injuries, Lumbosacral Spine Sprain Injuries, Lumbosacral Spine Strain Injuries, Lumbosacral Spondylolisthesis, Lumbosacral Spondylolysis, Pars Interarticularis Injury, Lumbar Spondylolysis, Sacroiliac Joint Injury, Thoracic Disk Injury, Thoracic Discogenic Pain Syndrome, and Thoracic Outlet Syndrome
- In a patient with failed invasive surgery the pain is often relieved by appropriate MS and its attendant therapy. The invasive surgery while well intended and corrective of found pathology often was not at the sight of the pain generator.

Beneficial Effects Resulting From The Use Of MS

- Improves functional conditions
- Helps pathology resulting from chronic physical stress
- Has beneficial biochemical effects on tissues due to increased body fluid flow locally and in the neurologically associated organs.

AUTOMIC NERVOUS SYSTEM

- Circadian rhythm of DNA programming manifests from brain to pituitary hormone production to target organ hormone production for blood vessels to pick up and distribute throughout the body.

Beneficial Effects Resulting From Use of MS

- Functional – increase of IVF circulation decrease of spinal nerve irritation, increases mobility, decreases irritation of spine pain generators
- Biochemical - increased circulation brings increased nutrition chemicals to the tissue cells and increased waste chemicals from the tissue cells. It also brings ordination chemicals i.e. hormones to the cellular structure to turn on or off the cellular factories precluding a breakdown in the chain of events biochemically from the failure of one tissue to work in sequence with the other tissues of the body.

What Is MS?

- MS is a technique for prevention of scar tissue formation and disrupting accumulation of scar tissue in and around the joints of the axial skeleton and lower extremities of the appendicular skeleton.
- MS is mechanically augmented axial thrust manual traction with or without axial skeleton manually vectored force at the level(s) of joint injury or fixation to restore motor unit mobility.
- Motor Unit of the spine is composed of two or more vertebrae involved in a specific movement of the body's axial skeleton or appendicular skeleton components.

Manipulative Surgery (MS) is performed by hand (surgery) and is movement of the body parts (manipulation).

MS is based on the concepts of classical Osteopathy, a comprehensive in-depth study of anatomy, physics, chemistry, and biology that must be understood before diagnosing and treating the patient.

- Manipulative Surgery (MS) is performed by hand (surgery) and is movement of the body parts (manipulation).

- MS can be performed with or without anesthesia (conscious sedation to general anesthesia).

Settings For MS Use

- Physician's office
- Clinic
- Hospital
- Long term care center

The medical device designed to assist in MS is a specially designed table with ergonomically correct ankle or pelvic and rib cage or head restraining orthopedic devices.

Objectives of MS Treatment

- Increase of joint range of movement by releasing Motor Unit Fixations thereby allowing flow of body fluids toward normal.
- Releases of fixations result in one or more of the following four perceptions by physician or therapist.

What Occurs During MS Treatment

1. Feeling the joint moving out of fixation into movement
2. Popping sound of either scar tissue release.
3. Popping sound of gas being released due to reduction of synovial fluid partial pressure.
4. Tearing of spider web fibrotic infiltrate which sound like the tearing of rotten cotton cloth.

Restoration & Normalization

- Repetition of the joint range of movement maneuvers is necessary to eventually restore full circulation of interstitial fluid to the associated tissues, i.e. disc, joint capsule, bone, cartilage, ligaments, and nerves.
- Axial and appendicular skeleton structures reconfigure their protein matrix toward their DNA programmed normal configuration as normalization of the mechanical stressors of the manipulative surgery treatments occur.
- The patient may experience reactive symptoms during this reconfiguration of structure.

Personnel Required For Performing MS

- The physician may perform the MS without assistance.

- However, therapists may be required to assist the physician in vectoring corrective forces during the axial thrust procedure for a more beneficial patient treatment.

The Manipulative Surgery Table is composed of a moveable section for the pelvis and lower extremities with ergonomically correct ankle (or pelvis) and ribcage (or head) orthopedic traction device.

Orthopedic Traction Harness Devices

Various size orthopedic traction harness devices conform to the patient's body structure allowing proper distribution of the thrusting force:

- Head Halter
- Chest Halter
- Pelvic Halter
- Ankle Harnesses
- Teeth Protective Sports Silicon Mouthpiece

The G-5 massager is used immediately after MS to back and neck for relief of excess neurological stimulation

ONE

Step-by-Step MS Instruction

- The physician or therapist technician is situated either at the foot of the table or beside the caudal flexible section.
- If, due to the requirements of the patient's axial skeleton segmental dysfunction complexity, transverse vectored forces are required, up to five additional assistants are positioned around the patient.
- Each assistant is asked to place hands on the patient in such a manner as to apply a correctional vectored force with a constant pressure.

TWO

Step-by-Step MS Instruction

- The physician or therapist technician then extends the table to the point that resistance is first felt and asks the patient to inhale then exhale.

- When the patient has exhaled the “posterior leaf” of the table is flexed towards the floor. Moving the posterior leaf to the right or left, approximately 40 degrees and then asking the patient to breath in and out, then flexing the posterior leaf to the floor may also be necessary to release fixations of the lateral bending motor unit, one or more combination of joints and muscles needed to do a certain task.

Three

Step-by-Step MS Instruction

- When the patient has exhaled completely the physician or therapist technician, grasping the caudal section of the table, flexes it toward the floor stopping at the appropriate stretch point (learned by experience in a preceptor program).
- The action of flexion in all of the above is either slow or rapid or a combination of both again depending on the presenting patient pathology.
- The finesse of the technique is the major part of the preceptor program needed to become proficient. The other part is diagnosing the need for the treatment.

The Time Needed For Effective MS Varies

- In chronic conditions traction manipulation by the Gear Technique needs to be carried out weekly at the minimum. This allows the body to accommodate the structural alignment changes by appropriate changes in tissue architecture.
- More frequent treatment may be needed for reduction of acute symptoms relating to body fluid obstruction mediated micro or macro tissue swelling (edema).
- The duration of active care may extend over days, weeks, months, or years until the swelling has been reduced, the tissue architecture has been restored to as normal configuration as possible, and the circulation surrounding the joint structure has been restored to normal function.

Normalization

- The normalization of circulation is noted when the joint is moved through its full range of motion without any limitation, noise, or discomfort.
- The physician/therapist technician simply feels a full separation of joint structures into complete anatomical range of motion extension without hindrance.

- The patient feels no discomfort and intuitively knows they have reached maximum medical improvement.

Reaction

- The Hippocratic oath states first, “Do no harm.” A patient undergoing Manipulative Surgery treatment may experience uncomfortable or unpleasant symptoms of varying degrees of intensity and duration.
- These symptoms are the result of the corrective forces cleansing and balancing the system as well as manipulative movements employed in releasing spinal nerve pressures that are causing body aches, pains and disease.
- These symptoms, although unpleasant, are unavoidable in that percentage of patients who experience them. These symptoms may be alone or in various combinations.
- This is known as “Reaction,” and may express itself in the form of single or multiple symptoms, such as headaches, dizziness, upset stomach, diarrhea due to improved bile secretion, extreme soreness of muscles, tenderness of the spinal joints, stiffness of joints, excessive urination as the body rids itself of accumulated toxins through improved kidney function, or even a slight rise in body temperature.
- These symptoms may be alone or in various combinations. However, pain and soreness are the most common symptoms.
- Reaction therefore is not due to a person being harmed but in fact due to a person being helped and the tissues waking up due to normalization of body fluid movement.
- “Reaction” more commonly occurs between the third and tenth treatments, but it may vary according to the individual and condition. When and if it appears, it may last from one to several days, but most commonly two or three.

“Reaction,” in reality, is a healthful change taking place in the body.

Actual Mechanics Of Change

- When the range of motion of the spine is being increased by the Manipulative Surgery treatment, the functional imbalance of the spine motor units is changed to a new state of functional imbalance, toward normal functional balance.
- There is an element of physical change that involves bones, muscles, ligaments, nerves, blood vessels, connective tissues and cartilage.
- All these tissues must take up new normal functions and positions.

- Is it most reasonable to believe that a “Reaction” will be felt when this change is taking place?
- About 20% of our patients experience little or no “Reaction.”
- If your patient is one of the 80%, DO NOT BE ALARMED if their “Reaction” seems to be adverse.

A Common Reaction

Example

- To point out an example of commonplace occurrence of “Reaction, I cite the following example. Have you not crossed or sat upon your legs and had one of them “go to sleep”. . .
- Then, upon uncrossing them, you experienced a numb tingling, painful sensation or, even a temporary complete loss of control of your leg?
- This is due to the obstruction of normal nerve circulation. In the act of uncrossing your legs, you are removing the obstruction and providing for normal circulation to be restored once again.

The ‘Reaction’ experienced following corrective treatments of the spine is due to removing the blood flow obstructions caused by motor unit structural malposition and its effect upon spinal nerve circulation, thereby providing for the normal flow of life energy to be restored to the effected target organ areas.

In other words,
 “Reaction” simply means
 RE-ACTIVATION.

SUMMARY

Noninvasive Manipulative surgery is more effective at solving a such a wide variety of diagnostic problems than is invasive surgical intervention that it should always be considered first in those patients whose condition is not obviously in need of invasive surgical correction.

REVIEW OF PATIENT BENEFITS

- Reduction or elimination of pain
- Increase of joint range of motion to or toward normal
- Reduced feeling of our consciousness being trapped in a non functional body
- Restoration of body fluid movement toward normal
- Restoration of balance between sympathetic and parasympathetic nervous systems
- Restoration of endocrine and other organ functional delivery vascular mechanism

“Years ago an American Sikh told me he saw God following the dynamic thrust of his treatment that left him unconscious for a few moments. He currently lives an extremely healthy life in Hawaii.”

Call To Action

- Physicians, you can use MS in your practice!
- You now have a new method for treating your patients, your family, and if you get others to help you, yourself. Children do not necessarily have to live with a disability their entire lives. People of any age will feel younger as they get older.
- As you observe the wonderful results and the gratefulness of your patients who thought no one could ever help them, you may want to become proficient in MS by attending seminars and participating in a worldwide research project for humanity.

Credits

Netter M.D., Frank H, The Ciba Collection of Medical Illustrations, Volume 1, Nervous System, Part 1 Anatomy and Physiology, Part 2 Neurologic & Neuromuscular Disorders, 1983.

Foundations for Osteopathic Medicine, published under the auspices of the American Osteopathic Association, Second Edition, 2003.